



ZIPSTRING™ STRING WIRE

The **ready-to-roll** string wire assembly reel

ZipString™ accelerates string wire installation with lightweight, pre-configured reels that roll cleanly down the tracker row. Delivered in location-labelled bundles with PV connectors already in place, ZipString™ ensures every connection lands exactly where it will connect to the module—eliminating error-prone measuring, cutting, and terminations onsite.

Paired with ci360™ String Wire Management, ZipString's™ tool-free design supports both under-torque-tube and back-of-module mounting to make installation intuitive for crews of any experience level. Just set ZipString™ on the CI-provided spool holder and pull it down the row in a matter of minutes for string wire install that eliminates re-work, is safer to handle, and delivers a more predictable build.



Deployment: ZipString™ on green buggy spool holder

= product feature specialized to Construction Innovations

Product Specifications

- Voltage rating: 1500V DC
- String wire sizes (AWG): #8, #10, #12
- Compatible with all major PV panels
- Waterproof, UV-resistant
- Labelled by row
- Bundled for single-pass installation

Ratings & Listings

- PV Connectors: UL recognized, TÜV certified
- Wire listed per Std. Subject 4703 and 44

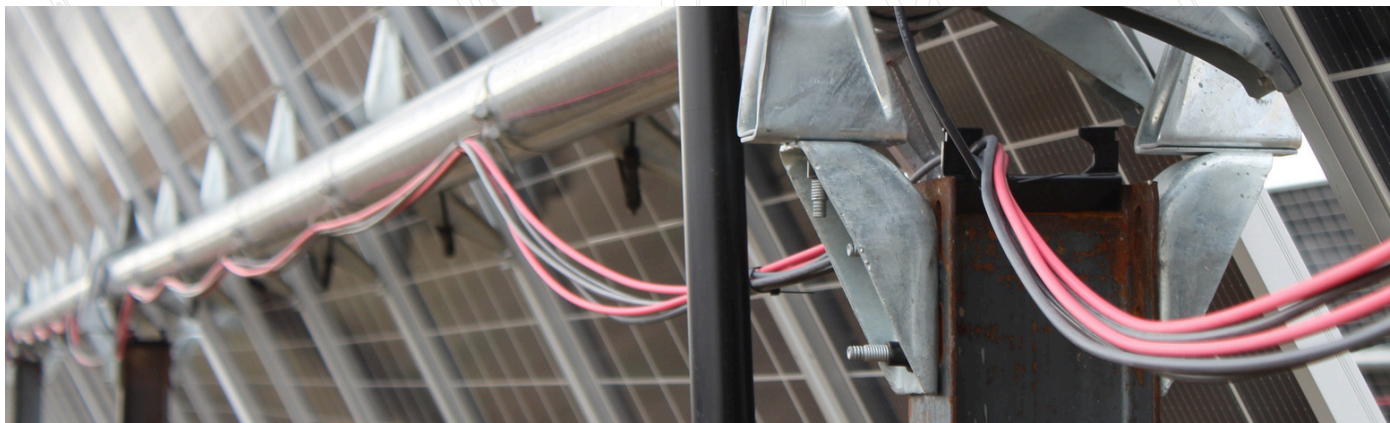
Deployment

- ZipString™ spool holders are available in a variety of options including green buggies, UTV-mounted or truckbed-mounted designs.



Shipped in a variety of reusable, easy-unload packages

String Wire Details				Installation Details		
Name	Wire Length	Current Capacity		PV Cable Materials	Recommended Wire Management	Mounting
ZipString™ String Wire	5" up to 1,000'	#8 AWG	50A	Copper insulated with chemically cross-linked polyethylene insulation	ci360™ String Wire Management	Under-torque-tube or back-of-module
		#10 AWG	35A			
		#12 AWG	25A			



Pictured: under the torque tube installation with ZipShield™ and ZipRing™ wire management